

FIAT PROFESSIONAL

DUCATO

BASE FOR MOTORHOMES

May 2025



LEADER IN FREEDOM

FIAT
PROFESSIONAL

DUCATO MOTORHOME RANGE

Van (103kW/380Nm)

Medium Wheelbase Mid Roof (MWB MR)

Long Wheelbase Mid Roof (LWB MR)

Van (132kW/450Nm)

Extra-Long Wheelbase Mid Roof (XLWB MR)

Cab-chassis (132kW/450Nm)

Long Wheelbase Low Roof Full Chassis (LWB LR)

Long Wheelbase Low Roof Special Chassis (LWB LR)

AL-KO Back-to-Back Low Roof (AL-KO B2B LR)

Engine

2.2L Multi-Jet Turbo Diesel

Transmission

8-speed automatic

Features

- Reverse Camera
- Cruise Control
- Stop/Start System
- Automatic headlights
- Automatic climate control
- Captain's chair front seats with height adjust
- 7" Digital Instrument Cluster
- Uconnect® infotainment system with 10" touchscreen
- Satellite navigation
- Bluetooth® connectivity
- Wireless Apple Carplay® ⁽¹⁾⁽³⁾ and Android Auto™ ⁽²⁾⁽³⁾
- DAB (Digital Audio Broadcast) Radio
- Steering wheel audio controls
- USB charge port
- Wireless phone charger
- TechnoLeather wrapped steering wheel and gear shifter
- Autonomous Emergency Braking (AEB) with pedestrian and cyclist detection
- 90L fuel tank
- Steel spare wheel



“BEST MOTORHOME BASE VEHICLE 2025” FOR THE 17TH YEAR IN A ROW

FIAT Professional Ducato has been awarded the prestigious “Best Motorhome Base Vehicle 2025”, continuing its winning streak. For the fifteenth time in a row, the readers of the German specialised magazine “Promobil” have voted again for the successful model from FIAT Professional. Ducato Fiat Professional is recognised as the best motorhome base by the major specialised publications in Europe above all for its technological qualities and the offered service excellence. With Ducato Fiat Professional your family can enjoy peaceful, carefree and safe holidays.



RANGE AND STYLE

A range aimed at your fun.

Many fittings, one mission



Discover the stylish versatility of Ducato, able to satisfy all your equipment needs.

Ducato is the perfect result of a long and fruitful cooperation of Engineering team and Style Centre. Thanks to this synergy Ducato was born with the best optimisation between the chassis and the living unit and offers the highest level of quality in the industry, from all perspectives: open cab roof and fitted with structural reinforcements, pivoting front seats that become part of the living room, a specific reduced-weight chassis for motorhomes, high stiffness and optimal connection to the living unit and tanks, widened rear track for more internal space inside and greater stability. A practical power socket perfectly integrates the electrical wiring between the vehicle and outfitting. The range offers multiple versions, with different gross weights, wheelbases, lengths and engines available to suit all motorhome builders needs. Everything is designed to always give you the perfect solution for your travels, both in appearance and in functionality.

Motorhome base chassis cab

STYLE ELEMENTS



Style dedicated to functionality, with a dynamic personality and a slender but decisive design: the attention to every design detail of Ducato is impossible to miss.

CONVERSION READY CAB



The cab, already set up for conversion (with reinforced cab pillars, without roof or rear partition), offers factory quality for all outfittings and Fiat Professional type-approval of the seat belts.

CAPTAIN CHAIR



Captain's Chair with two armrests, also available on original Fiat Professional type-approved pivoting plates. Ample space between the seats to ensure freedom of movement. (Overseas model shown).



Overseas model shown

SUSPENSIONS



MacPherson front suspension with independent wheels, standard front and rear antiroll bar reinforced springs for motorhome versions.

CONVERSION SOCKET



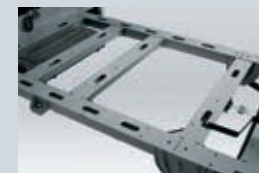
Reliable CAN architecture electrical system arranged for the connection with the living unit.

REAR TRACK



Widened rear track for greater stability and more room across the entire living unit.

CHASSIS SPECIAL



Chassis Special. Fiat Professional's idea of a lighter and more functional chassis for motorhomes with high torsion strength, designed to offer greater payload and less distance from the ground to the threshold of the living unit.

PARABOLIC LEAF SPRINGS



Depending on the type of model, different types of specific parabolic leaf springs are available, for motorhome versions for rear suspension, including a suspension in composite material.

THE PERFECT BASE

FOR YOUR NEW MOTORHOME

The Premium AL-KO AMC Chassis is available as an option for motorhomes with Fiat Ducato cabs.

With a combination of clever engineering and premium quality components, the AL-KO AMC Chassis offer the **ultimate in comfort and superb driving dynamics**, to ensure your holiday begins the moment you set off. The innovative lightweight construction reduces weight without affecting stability. This means the payload of the motorhome can be increased without compromising on safety. A low centre of gravity ensures **improved stability**, whilst the wide track chassis results in better road holding. The **interdependent rear torsion bar suspension** is included as standard and greatly improves drive performance, transforming bumps into gentle vibrations. Various additional **high tech component available options** to suit the AMC chassis can further enhance the comfort, safety and value of your motorhome. As a global leader in chassis technology, AL-KO works closely with Fiat all around the world to continually develop the AMC chassis to ensure optimum ride comfort.



Component options with AMC Chassis include:



HY4 LEVELING SYSTEM

Fully Automatic hydraulic leveling system with smart device connectivity.



ACS (AL-KO COMFORT SUSPENSION)

Replacement front spring and shock absorber for higher axle capacity and 40mm suspension lift.



- LOWER WEIGHT FOR GREATER PAYLOAD
- INCREASED COMFORT AND SAFETY
- ASSEMBLED IN AUSTRALIA



Image shown for illustrative purposes only

AL-KO
QUALITY FOR LIFE

Approved by
FIAT

DUCATO MOTORHOME BASE VAN VERSION

Distinctive Design and Features.

Compactness, drivability and handling, enhanced interior comfort: being top-in-class is easy for the Ducato Camper Van.

Ducato base for Motorhomes is designed with a modular base that can be customised in every way, providing different solutions and sizes for any need. The ratio between the vehicle's total length and rear cargo area ensures maximum space and maximum quality of life while travelling.

Ducato base in its van version is developed in a range of offers: 3 lengths, 2 engines and GVM from 3,510 to 4,250kg.

Its unique square shaped rear compartment allows you to take advantage of every available centimetre for your living unit. With an adjustable steering wheel, minimal turning circle and maximum front and side visibility, manoeuvrability is made easy. The reverse camera, embedded in the third brake light, provides a wide, detailed view on the central 10" touchscreen, with reference lines helping determine the distance to obstacles.



Overseas model shown, local specifications may vary

DRIVE TO THE FUTURE

Choosing a Ducato motorhome base vehicle allows you to enjoy the road and admire landscapes while driving in safety and relaxation.



ADAPTIVE CRUISE CONTROL*

Activated by handy and intuitive commands on steering wheel, Adaptive Cruise Control set and automatically adjusts the vehicle speed to maintain a safe distance from vehicles ahead. Works with the forward looking camera on windscreen and proximity radar located on front bumper, providing functionality between 30 km/h and vehicle top speed, ensuring best reliability even with bad weather conditions.

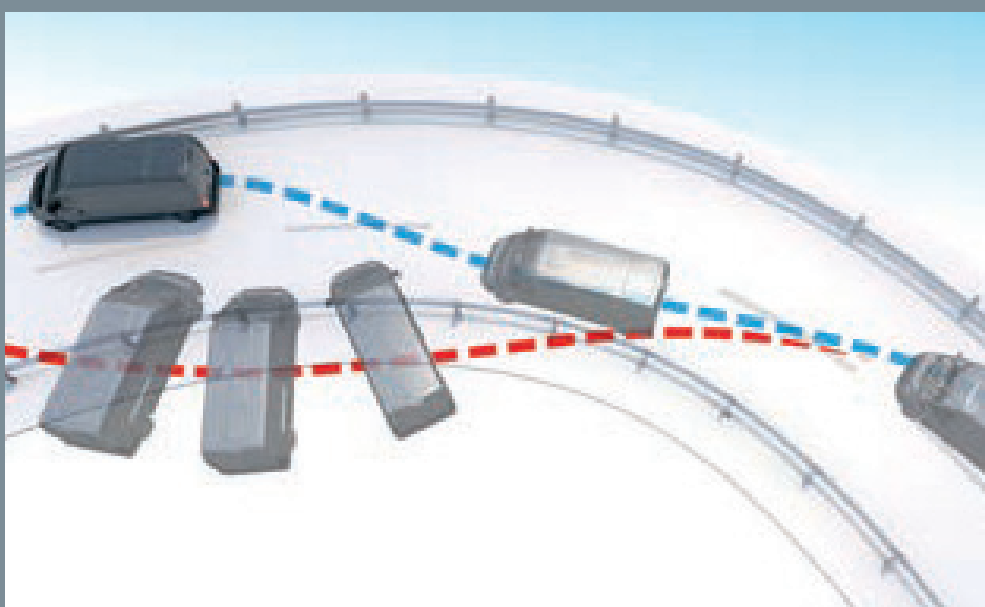
* Not Available with AL-KO Cab-chassis



DIGITAL CENTRAL REARVIEW MIRROR^ OPTIONAL FEATURE

Central rearview mirror becomes a digital 8.9" LCD high-resolution display. When driving, it provides an unobstructed and clear view of the road behind, thanks to a wide-angle, high-definition camera located inside the rear third stop lamp bracket. Autodimming, activation and brightness controlled by buttons located on the mirror.

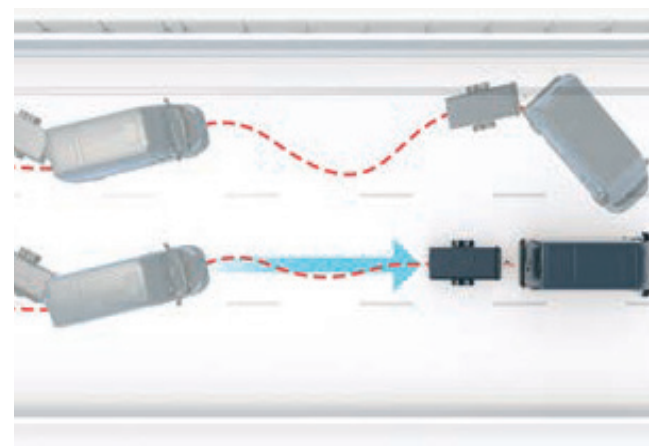
^ Not Available with Cab-chassis variants



ELECTRONIC STABILITY CONTROL (ESC)

ESC is the most advanced electronic system for vehicle stability and is the heart of onboard active safety. It constantly monitors vehicle travel (direction and wheel movement) and, if necessary, applies brakes to the single wheels or decreases engine power to reduce speed. On Ducato, the system has been upgraded, adding 3 features:

- CROSS WIND ASSIST.
- TRAILER STABILITY CONTROL SYSTEM.
- POST COLLISION BRAKING SYSTEM.



TRAILER STABILITY CONTROL

Detects when a trailer is starting to oscillate and corrects any dangerous trailer swing, through a combination of either torque reduction and/or individual wheel braking (function included in the ESC as standard).



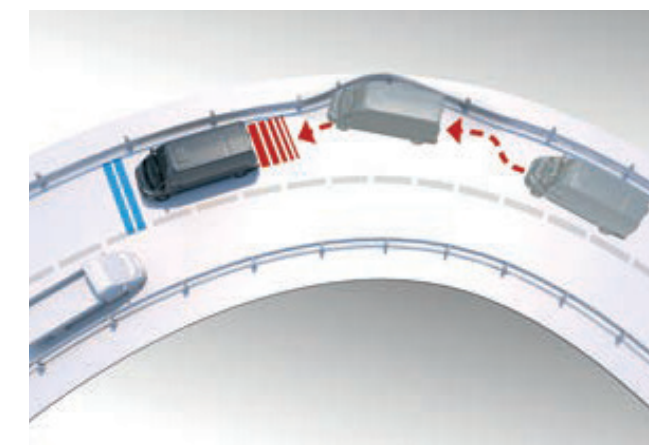
ROLL OVER MITIGATION

Another function of the ESC system, designed for situations in which there is a high risk of rolling, reducing such a risk and improving the stability of the vehicle on the road surface, also around corners (function included in the ESC as standard).



CROSS WIND ASSIST

Through the use of brakes, intervenes to help stabilize the vehicle through strong crosswinds, helping to keep the vehicle from drifting out of its lane (function included in the ESC as standard).



POST COLLISION BRAKING

Intervenes in the event of an accident, automatically applying brakes to prevent secondary potential collisions (function included in the ESC as standard).

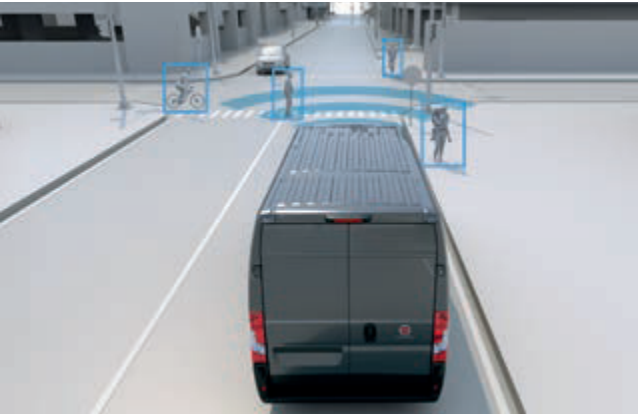
ADVANCED DRIVER ASSISTANCE SYSTEMS



TRACTION+
Traction+ is the “intelligent electronic differential” that helps the Ducato motorhome tackle mud, sand, snow and wet grass. The system transfers torque from the slipping wheel to the one with the most grip in order to regain traction.



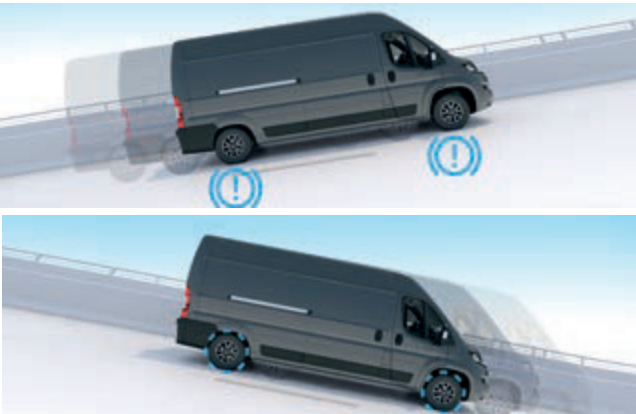
TRAFFIC SIGN RECOGNITION (TSR)*
By using the Lane Control camera, the system recognises the speed limit and displays it on the instrument cluster



AUTONOMOUS EMERGENCY BRAKE CONTROL
The well-known Full Brake Control, thanks to a generation of forward looking camera located on top of windscreen, increases its functionalities and detects now pedestrians and bikers, in addition to vehicles. Working mode remains the same: vehicle either alerts the driver and triggers an autonomous emergency.



BLIND SPOT ASSIST ^
The BSA uses radar sensors to detect upcoming vehicles that are not visible when in the blindspot angle of the rearview, mirrors and, in case of risk, alerts the driver with awarning light on the mirror itself and awarning sound.



HILL HOLDER
Holds the vehicle during hill starts, preventing it from moving backwards without use of the handbrake. The brake is automatically released (function included in the ESC as standard).

HILL DESCENT CONTROL*
On downhill slopes, Hill Descent Control integrated in Traction+ helps maintain the desired speed with no need for constant braking. So you can focus on steering, without distractions. The function can be activated via a specific button on the dashboard.



AUTOMATIC HEADLIGHTS
The dusk sensor automatically activates the dipped beam headlights when there is insufficient outside light.



REAR CROSS PATH DETECTION ^
The RCD uses radar sensors to detect upcoming vehicles from the side, when reversing. It helps avoiding accidents when maneuvering, in particular on vehicles with a limited view angle, as camping-cars



TYRE PRESSURE MONITORING SYSTEM (TPMS)
This system continuously monitors tyre pressure and indicates any decreases on the instrument display.



RAIN SENSING WIPERS
The rain sensor activates the windscreen wipers and adjusts their speed according to the intensity of the rain.



INTELLIGENT SPEED ASSIST *
Vehicle detects speed warning signs on the road thanks to traffic sign recognition and gives information to the system, offering the driver to set the vehicle speed limiter accordingly. It helps to avoid speed violations at any time.



ATTENTION ASSIST *
Monitors driving patterns and detects fatigued driving. If the system detects inattentive driving patterns, an audible sound and message on the display panel will bring this to the driver's attention.

^ Not Available with Cab-chassis variants
* Not Available with AL-KO Cab-chassis

OPTIONS

		Van	Cab-chassis
Tech Pack	360° perimeter parking sensors	○	-
	Digital central rearview mirror		-
	Keyless Entry & Go		○
Style Pack	16" black star design rims	○	○
	LED headlights		
Heated Window Pack	Glazed Rear Doors	○	-
	Rear Heated Window		
	Heated Windshield		

(•) Standard (○) Option (—) Not available

COLOURS

EXTERIOR COLOURS		
549	White	(standard)
385	Grey Lanzarote	(optional special solid)
676	Grey Expedition	(optional special solid)
691	Grey Iron	(optional metallic)
113	Grey Artense	(optional metallic)
632	Black	(optional metallic)
INTERIOR TRIM		

Crepe beige fabric upholstery



549 – White



385 – Grery Lanzarote



676 – Grey Expedition



691 – Grey Iron



113 – Grey Artense



632 – Black

Overseas model shown

SPECIFICATIONS

MODEL CODE	290-A34-2	295-G34-2	295-H36-2	295-G16-2	295-G56-2	295-J1Z-2
Variant	MWB MR	LWB MR	XLWB MR	LWB LR		AL-KO B2B LR
Body	Van			Cab-chassis		
POWERTRAIN						
Engine Description	2.2L Multi-Jet turbo diesel					
Engine Displacement (cc)	2184					
Max. Power (kW @ rpm)	103 @ 3500		132 @ 3500			
Max. Torque (Nm @ rpm)	380 @ 1400		450 @ 1500			
Transmission	8-speed automatic					
Driven wheels	Front wheel drive					
FUEL						
System	Electronically Controlled Common Rail Multijet 3 Direct Injection with Variable Geometry Turbocharger and Intercooler					
Fuel Tank Capacity (L)	90					
SUSPENSION						
Front	Independent, MacPherson Type with Wishbones, Coil Springs, Telescopic Shock Absorbers and Anti-Roll Bar					
Rear	Rigid Tubular Axle and Longitudinal Parabolic Leaf Springs, Telescopic Shock Absorbers and Flexible Side Buffers					
BRAKES, WHEELS & TYRES						
Front Brake - Size (mm)	300 x 32					
Rear Brake - Size (mm)	300 x 22					
Tyres	225/75 R16 CP					
Wheels	6J x 16					
Turning Circle (kerb to kerb) (m)	12.5	14.3	15.3			
SERVICE & WARRANTY						
Service Intervals	1 year / 20,000km					
Warranty Terms	5 years / 200,000km					
Roadside Assist	5 years					
WEIGHTS AND CAPACITIES						
DIMENSIONS - EXTERIOR						
Wheelbase (mm)	3450	4035				
Length (mm)	5413	5998	6363	5943		
Width (mm) (excl. side mirrors)	2050					
Height (mm)	2522			2254		
DIMENSIONS - LOAD COMPARTMENT						
Length (mm)	3120	3705	4070			
Width (mm)	1870					
Wheel arches width (mm)	1422					
Height (mm)	1932					
Volume (m3)	11.5	13.0	15.0			
WEIGHTS						
Kerb Weight (kg)	2020	2115	2160	1805	1730	
Payload (kg)	1490	2135	2090	2595	2670	
Gross Vehicle Mass (kg)	3510	4250	4250	4400	4400	



* Overseas models may be shown in imagery, Australian model and actual colours may vary. All product illustrations and specifications are based upon current information. Stellantis (Australia and New Zealand) Pty Ltd ABN 23 125 956 505 trading as Stellantis Australia reserves the right to make changes from time to time, without notice or obligation, in prices, specifications, technical information, accessories, colours, materials and to change or discontinue models. All vehicles, models, features, colours and/or accessories shown may not be available in Australia from time to time or at all. "Optional" may mean available as an option but only at an additional cost.



FIAT MOTORHOME CUSTOMER ASSISTANCE CENTRE

1800 870 718

Operating Hours

8:00am-5:00pm AEST Monday – Friday
National Public Holidays excluded



VEHICLE WARRANTY

5 year/200,000km warranty⁽⁴⁾



SERVICING

Your Ducato is designed to work, not rest.
This means it only requires an oil change
and service every 12 months/20,000km
(whichever occurs first).

(1) Apple Carplay® requires an iPhone 5 or later version of iPhone, running iOS 7.1 or above. The function of Apple Carplay® requires mobile data for full capability. Compatibility and performance can vary and change. (2) Android Auto® requires an Android 5.0 or later version of Android, installed with the Android Auto® Application. The function of Android Auto® requires mobile data for full capability. Compatibility and performance can vary and change. (3) Android Auto® and Apple Carplay® is available* on, and compatible with, Infotainment Systems installed in select FIAT vehicles. FCA is not responsible for the availability, compatibility or use of applications, products and software supplied or supported by third parties. (4) 5 years from the date of vehicle registration or 200,000km (whichever comes first).